

Connaught Gardens Morden, SM4 6DB

£425,000 Freehold



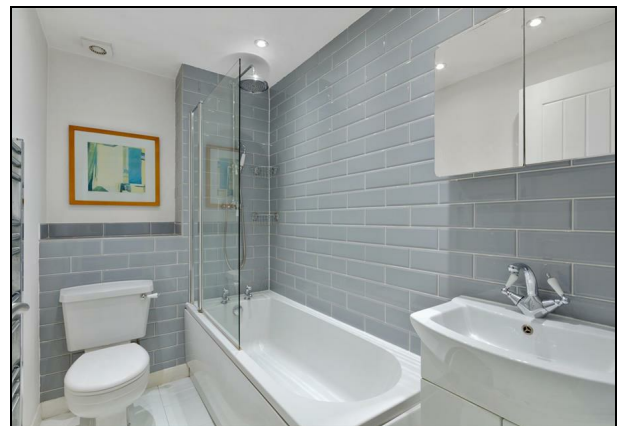
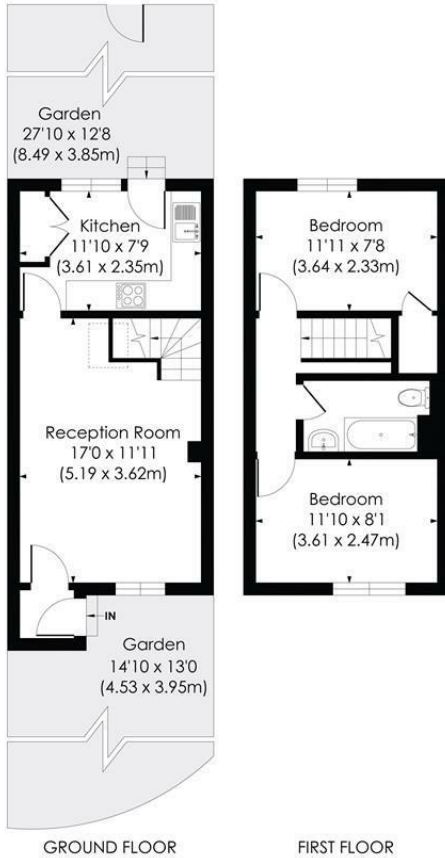
A charming two double bedroom modern freehold terraced house, boasting 2 allocated parking and a pretty private garden, located in a secluded cul-de-sac close to Morden Town Centre and the Northern Line Tube Station.

Comprising of an open plan reception that leads into a kitchen at the rear opening out onto a low maintenance Southern facing garden with shed storage. Upstairs are two double bedrooms and a family bathroom, with further storage in the loft space above. The property is within walking distance to the beautiful Morden Hall Park and River Wandle. This is a superb purchase for a first time buyer or buy to let investor looking to buy in a desirable location.

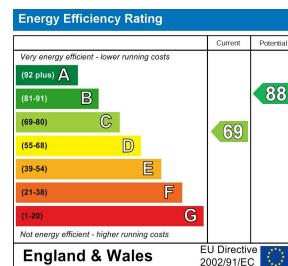
CONNAUGHT GARDENS, SM4

Approx. Gross Internal Floor Area

624 Sq. ft/57.98 Sq. m



- Modern Terraced House
- Freehold
- Allocated Parking for two cars
- EPC Rating C
- Council Tax Band C
- Close to Morden Town Centre and Northern Line Tube
- Located in a Quiet Cul-De-Sac
- South Facing Private Garden



For Free Mortgage Quote and Best Mortgage Rates, call Ellisons Mortgage Advisor on 0208 543 1166



Although these particulars are believed to be correct, their accuracy is not guaranteed and they do not form part of any contract.

Celebrating 30 years of successful Sales and Lettings in Merton

